

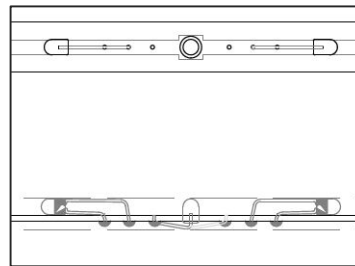
Exit sign module: GBD EXIT KIT

The Guide-LITE GBD module provides visible way guidance. LED sets are enclosed in a polycarbonate envelope, for the installer to fit to the chosen extruded aluminium housing. The GBD/EXIT kit is a combined LED and EXIT module, to mount upright alongside a doorway. Modules plug together using a series/ parallel circuit configuration. The system can be used in conjunction with high level conventional emergency lighting.

- Long life LED
- Snug fit into aluminium extrusions

Specification

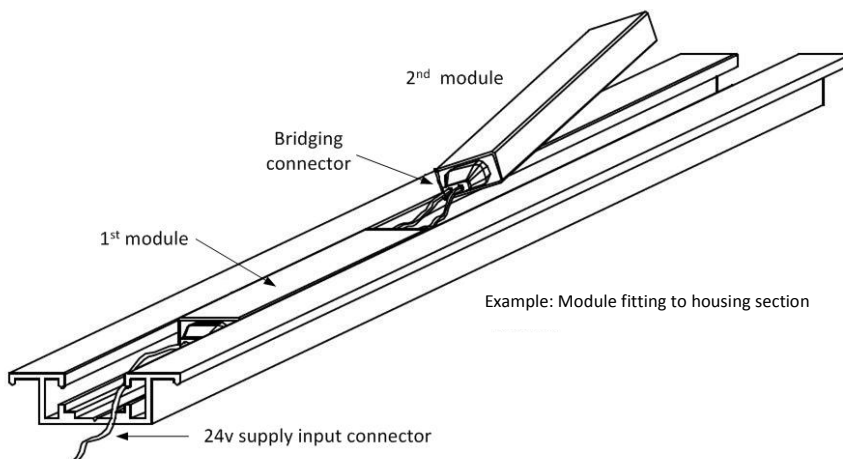
Input voltage:	24V DC
Light source:	LED module, THO Light green LED set above EXIT
Extrusion material:	Fire retardant polycarbonate (>850 deg C), UV stabilised
Legend:	EXIT vertical form – green background
Dimensions LW (mm):	784 x 15, Legend height -200mm



LED arrangement



Product code	Description
GBD/EXIT/KIT	Module, 784mm in length with vertical EXIT, green background at foot of the section



The content of this Thomas & Betts specification sheet has been checked carefully for accuracy at the time of print. However, Thomas & Betts does not give any warranty of any kind, express or implied, in this respect and shall not be liable for any loss or damage that may result from any use or as a consequence of any inaccuracies in or any omissions from the information which it may contain. We reserve the right to modify, update products as part of our policy of continuous product development. E&OE.